

One step at a time

Behind the elegant copper finishes
of this kitchen is a thoughtful
response to an impractical plan

Photography Ståle Eriksen





MEET THE ARCHITECT

Mike Shaw is one of the director's of Proctor & Shaw

What are the benefits of using bespoke fronts?

'Off the shelf' cabinets can be procured and assembled cost effectively but often lack the choice of finishes and materiality that discerning clients are looking for. Ordering bespoke fronts, made to standard sizes, allows for a more coherent overall design at more affordable prices.

Why did you use Microcement?

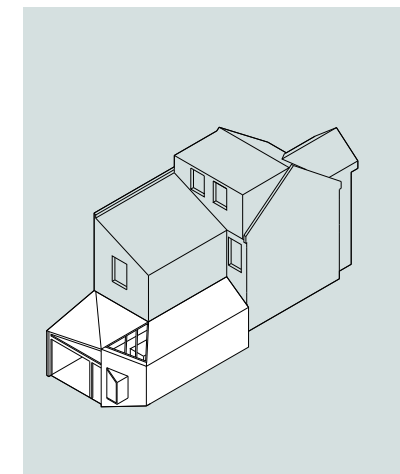
Microcement, as a waterproof and seamless material, allowed the sculptural window seat wall to be expressed in a single monolithic material both internally and outside. In addition, conventional kitchen backsplash materials such as tiles or glass panels could be avoided, giving a calmer and more sophisticated quality to the space through subtle material expression.

Was it important to also include open shelving?

Open shelving lends itself to creating a relaxed atmosphere, allowing clients to inject their personality into the space with the display and storage of household objects. In this instance the strong grained natural timber finishes also add warmth and reflect the strong material expression of the structural ceiling above.

How has the extension improved the space?

The gentle sloping steps allow the clients to make a gradual, controlled descent into the garden through distinct yet connected kitchen, dining and outdoor terrace zones.



A swarm of character-fuelled, period properties line the streets of London and seemingly continue to charm buyers despite presenting segregated floorplans that appear almost anti-social in the modern world. For many of these buyers the frustrating layouts lead to eventual extensions and/or reconfigurations. This narrative is all too familiar for the young family residing in a South West London Edwardian terrace. Exasperated with the leaky conservatory that perched 1.2m above their garden, they enlisted Proctor & Shaw to reimagine the space into an open-plan, practical family hub. "We lowered the ground floor significantly towards the back of the house and designed a sequence of stepped plateaus expanding the height, light and volume of the space," architect Mike Shaw explains. Adding depth within the L-shaped extension not only ensured a direct connection to the garden but also laid the foundations for a bright and airy room that is now utilised as the cooking-cum-dining space. Rather than trying to squeeze a conventional kitchen into the new plan, the architects opted for a more considered approach. "We wanted the kitchen to feel like elegant custom furniture." Thus, Ikea cabinet carcasses have been concealed behind bespoke, duck-egg blue doors that are offset by soft timber shelves, copper accents and a birch ply island that offers a more casual space for dining.

PROJECT NOTES

PROJECT SIZE
Before extension, 172 sq. m; after extension, 186 sq. m

LOCATION
Wimbledon Park, South London

ARCHITECTS
Proctor & Shaw
proctorandshaw.com

ENGINEER
Jensen Hunt Design

MAIN CONTRACTOR
Roberto Nunez

CABINET CARCASS
Ikea

BESPOKE FRONTS
Naked Doors

