

enki

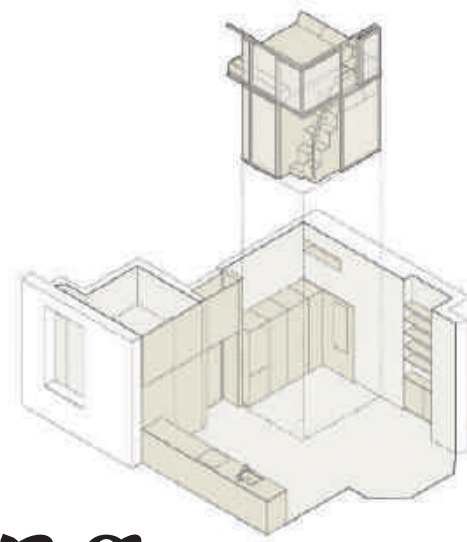
FOR
MODERN
LIVING

THE HOME OF DESIGN & ARCHITECTURE

SUSTAINABLE
LIVING

new thinking

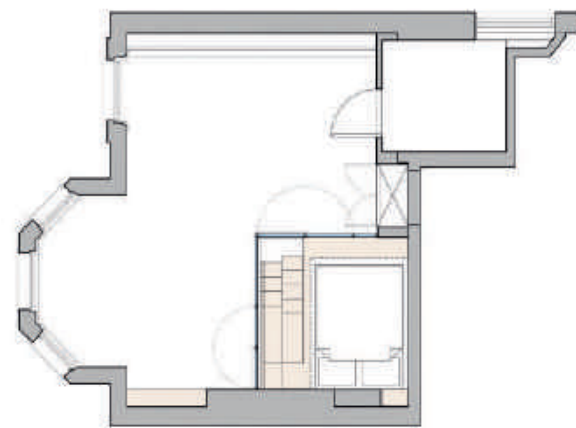




designs in micro living

The interior of an uninspiring apartment in Belsize Park London is re-imagined by Proctor & Shaw into a stylish and practical home inspired by Japanese shoji screens





When you only have a footprint of 29 square metres to play with, necessity provokes invention. And although these configurations have all been tried and tested in city dwellings where space is at a premium, Proctor & Shaw has made its usual high class stamp on this particular project. It is, they claim, a “study in materiality, transparency and enclosure. The project is conceived as a prototype for micro living in existing housing stock characterised by a constrained footprint but traditionally generous ceiling heights.” A poky and uncomfortable cellular room has been replaced by a generous multi-functional living space arranged around a translucent sleeping ‘pod’ that takes inspiration from Japanese shoji screens. By cleverly stacking accommodation in a single height volume, additional floor space is conjured to provide a real sense of luxury and design quality. But more than that, the translucent nature of the walls inspire a feeling of something beyond, blurring the boundary of the property and injecting a little bit of magic. Part playful, part super smart, this blueprint is certainly worthy of consideration for any tight spaced projects to come. proctorandshaw.com

With a ceiling height of 3.4 metres the architects saw potential in creating a second storey in the main living space to house the sleeping quarters. By using a king-sized bed inside the new room, a heightened level of comfort is achieved

Images: Stale Eriksen



“ARRANGED AROUND A TRANSLUCENT SLEEPING POD INSPIRED BY JAPANESE SHOJI”